

FCAA DATA SPOTLIGHT

HIV PHILANTHROPY FOR THE US SOUTH



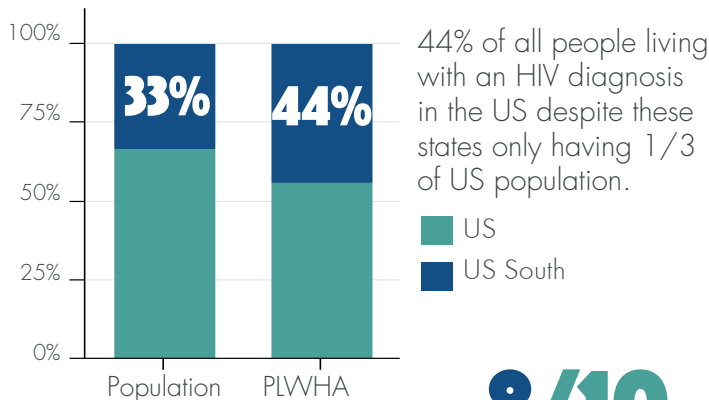
The US South is the epicenter of the National epidemic - home to 44% of all people living with HIV/AIDS in the US. However, this region only receives roughly less than a quarter of total HIV-related philanthropy for the US each year. These conditions are even more stark in the nine "Deep South" states - as defined by the Southern AIDS Strategy Initiative - home to the highest HIV diagnosis rates and number of people living with HIV than any other US region.

Distilled from FCAA's annual resource tracking report, *Philanthropic Support to Address HIV/AIDS in 2014*, the following data offers an important new benchmark: the first analysis of HIV-related philanthropy for the US South.

THE NEED

The US South has many factors that contribute to the high HIV infection rates including: transportation and financial barriers to receiving HIV care and testing; areas of extreme poverty; and HIV-related stigma and discrimination, among others.

THE US SOUTH HAS:



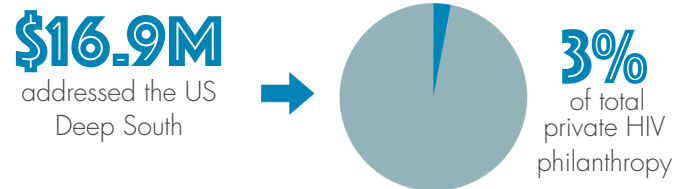
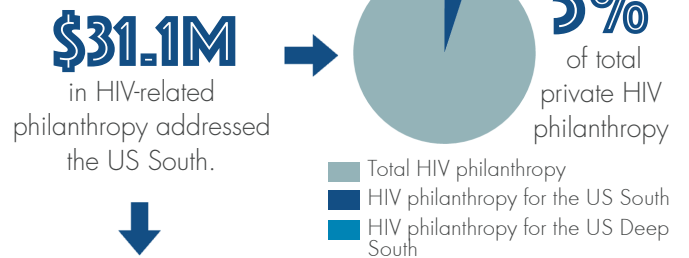
The **10** metropolitan statistical areas (MSAs) with the highest rate of new infections.

The **4** states with the highest proportions of people without health insurance.

8/10 of states with the highest rates of new HIV diagnoses.

52% of deaths attributed directly to HIV or AIDS, and **THE HIGHEST DEATH RATES** among individuals diagnosed with HIV.

IN 2014:



GENERAL FUNDING DISBURSMENT

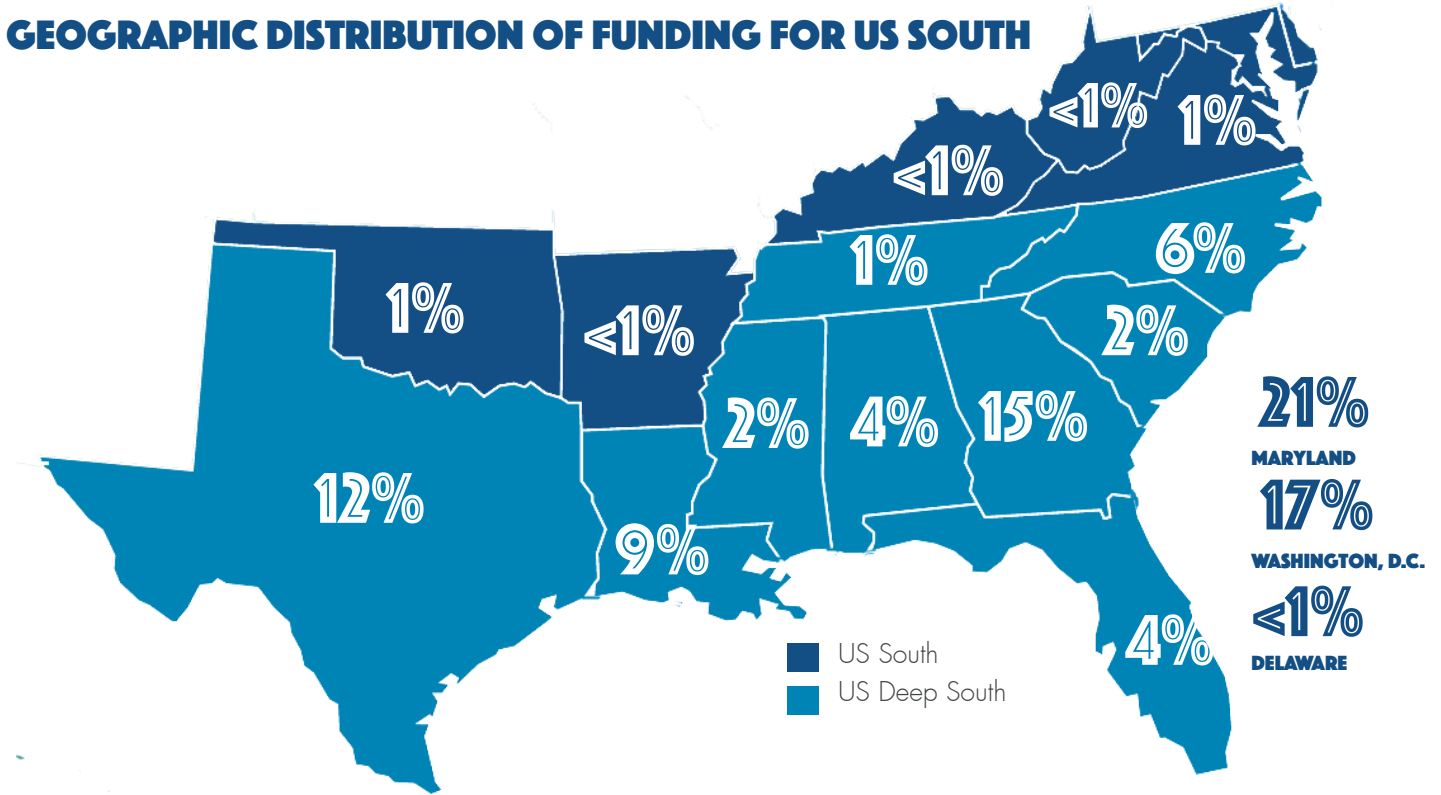
US SOUTH **\$31,093,031** **US DEEP SOUTH** **\$16,933,045**

61 **FUNDERS** **38**

698 **GRANTS GIVEN** **418**

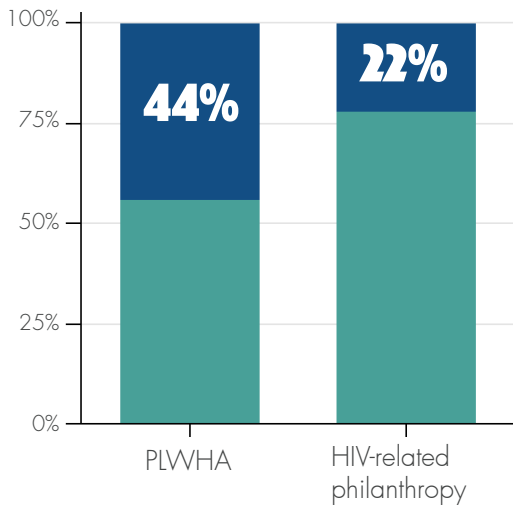
329 **GRANTEE ORGANIZATIONS** **212**

GEOGRAPHIC DISTRIBUTION OF FUNDING FOR US SOUTH

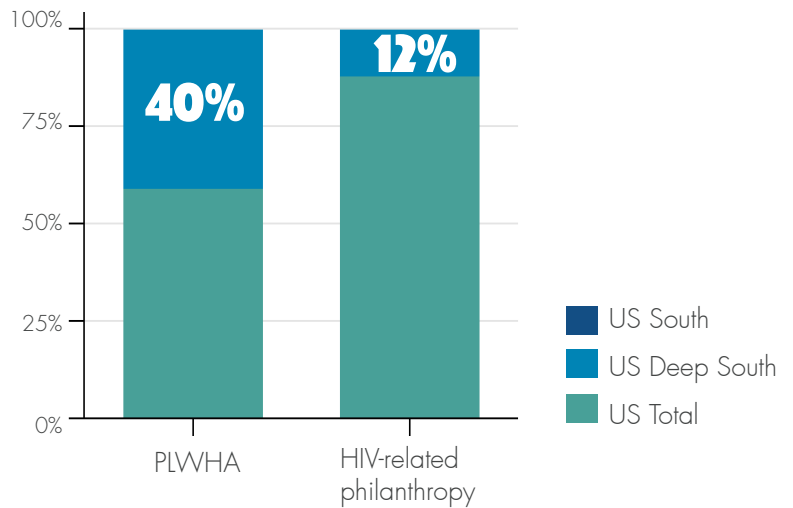


HIV-RELATED PHILANTHROPY DISTRIBUTION VS. PLWHA

US SOUTH VS. US TOTAL



US DEEP SOUTH VS. US TOTAL



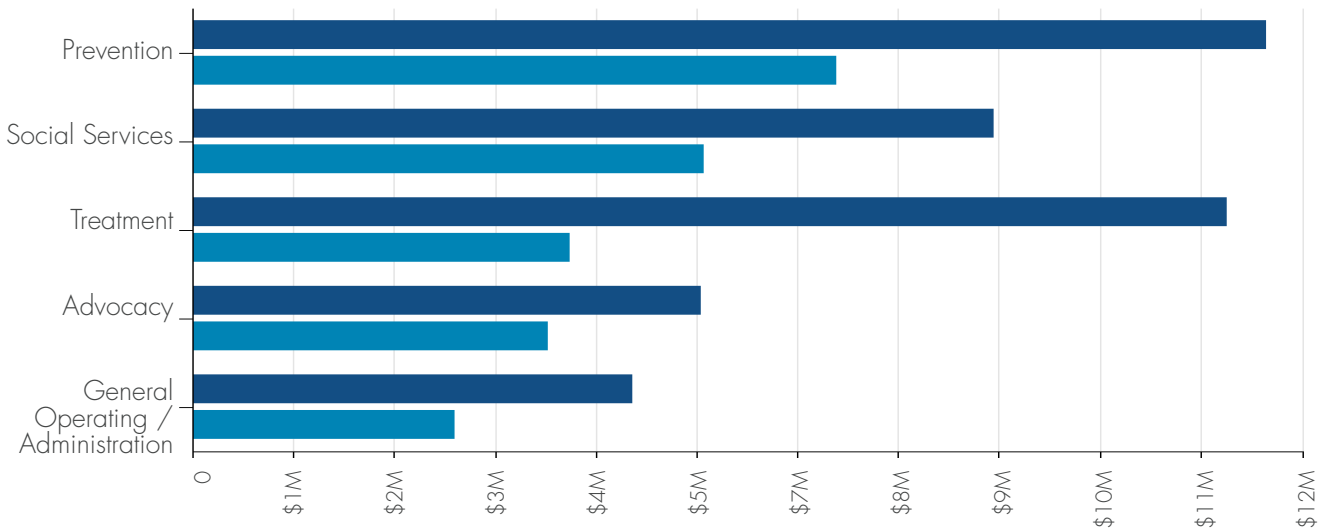
BREAK DOWN OF DOLLARS PER PERSON LIVING WITH HIV/AIDS

To assess the level of funding relative to need, FCAA analyzed national and regional HIV-related grantmaking compared to the number of people living with HIV/AIDS in the corresponding areas.

AREA	\$ PER PLWHA
US TOTAL	\$116
US SOUTH	\$59
US DEEP SOUTH	\$35

INTENDED USE OF FUNDING

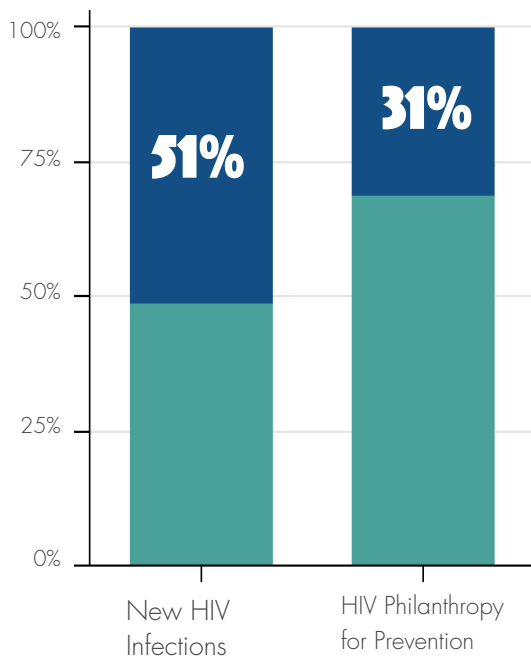
TOP 5 US SOUTH VS. US DEEP SOUTH



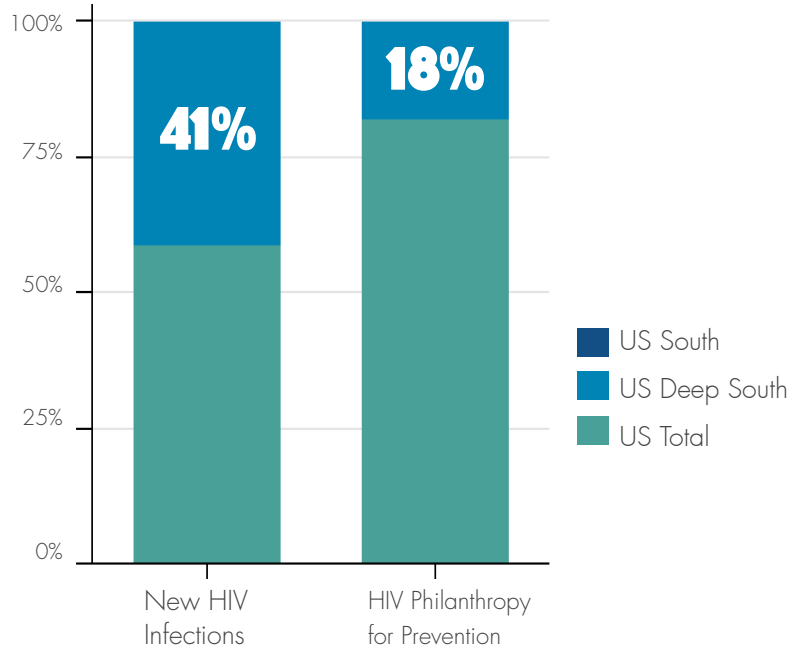
US HIV-RELATED PHILANTHROPY FOR PREVENTION VS. NEW HIV INFECTIONS (2014)

	ALL U. S.	U. S. SOUTH	U. S. DEEP SOUTH
PREVENTION	\$34,000,000	\$10,656,246	\$6,384,726
TOTAL NEW HIV INFECTIONS	44,073	22,556	18,087

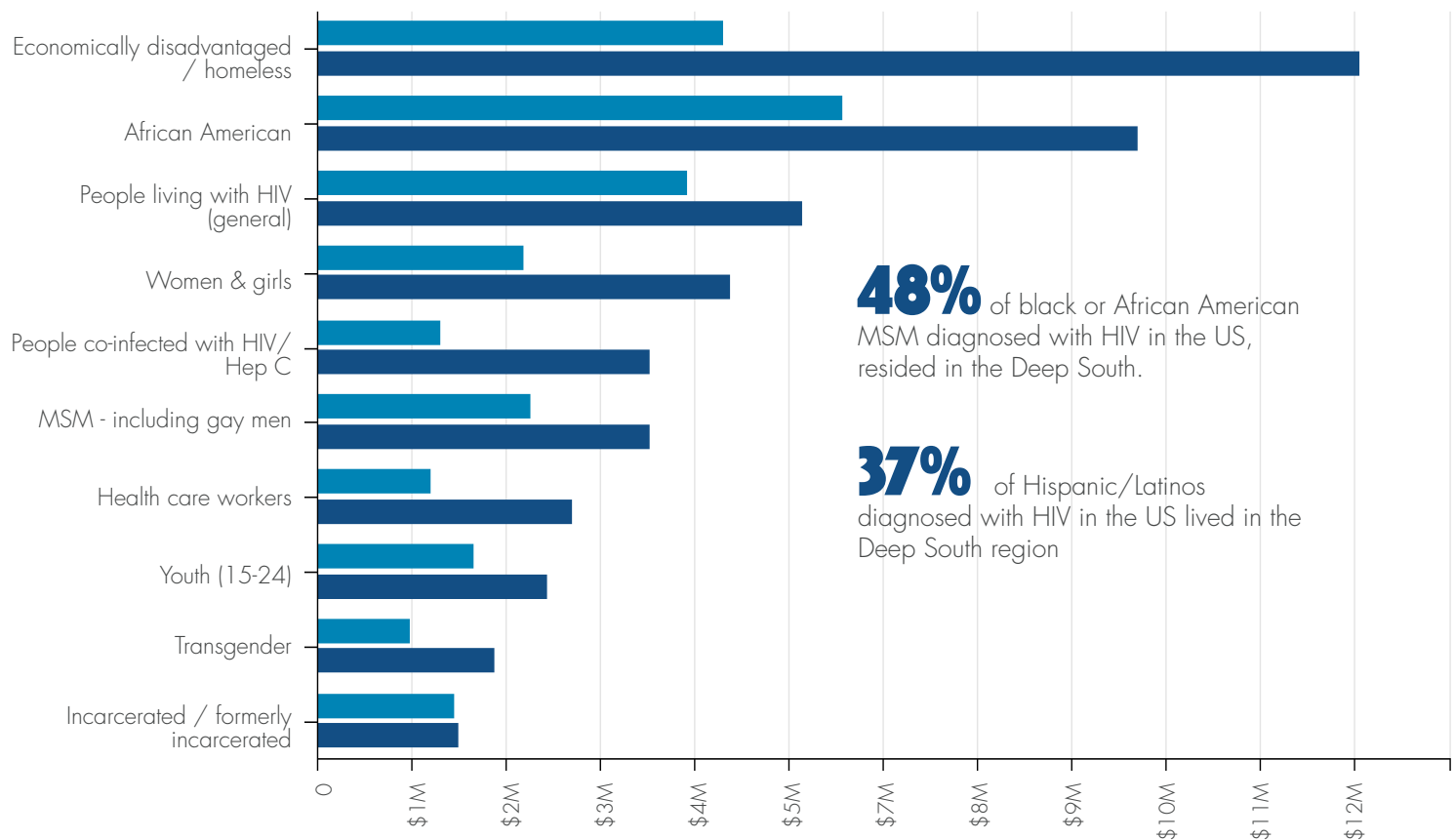
US SOUTH VS. US TOTAL



US DEEP SOUTH VS. US TOTAL



TOP HIV-RELATED PHILANTHROPY FUNDING DISTRIBUTION BY TOP 10 POPULATIONS US SOUTH VS. US DEEP SOUTH



48% of black or African American MSM diagnosed with HIV in the US, resided in the Deep South.

37% of Hispanic/Latinos diagnosed with HIV in the US lived in the Deep South region

TOP 10 PRIVATE FUNDERS: HIV IN THE US SOUTH

1. Gilead Sciences
2. Anonymous
3. AIDS United
4. The Ford Foundation
5. M.A.C. AIDS Fund and M.A.C. Cosmetics
6. Elton John AIDS Foundation
7. ViiV Healthcare
8. Washington AIDS Partnership
9. Broadway Cares/Equity Fights AIDS
10. Kaiser Permanente

94%
of funding came from the top 10 donors

TOP 10 PRIVATE FUNDERS: HIV IN THE US DEEP SOUTH

1. Gilead Sciences
2. AIDS United
3. Elton John AIDS Foundation
4. M.A.C. AIDS Fund and M.A.C. Cosmetics
5. Broadway Cares/Equity Fights AIDS
6. Community Foundation for Greater Atlanta
7. Kaiser Permanente
8. Design Industries Foundation Fighting AIDS (DIFFA)
9. Houston Endowment Inc.
10. Merck

76%
of funding came from the top 10 donors

In addition to FCAA, data for this report is gathered from Centers for Disease Control and Prevention, Southern AIDS Strategy Initiative, and The World Health Organization.